

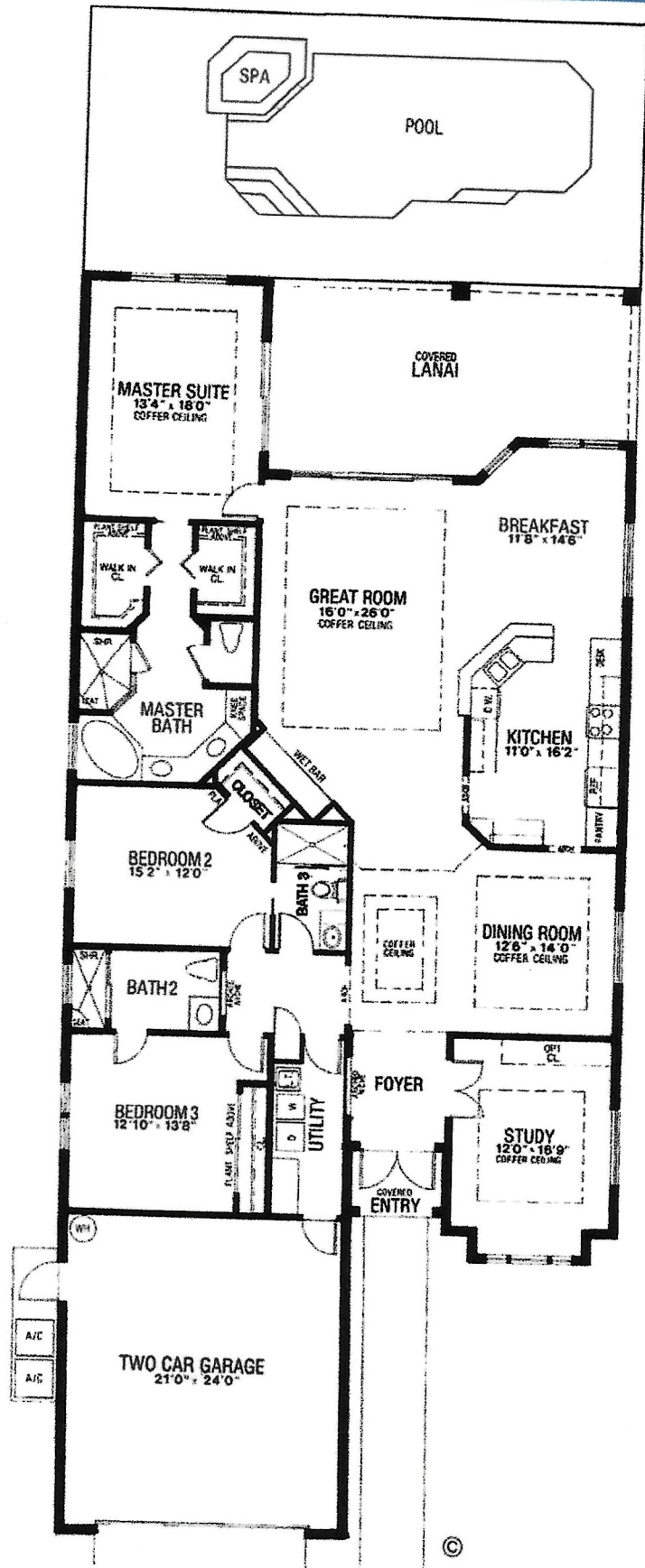
PALERMO

Three Bedrooms, Study,
Three Baths

A/C Living Area 2,690 sq. ft.
Covered Lanai 380 sq. ft.
Garage 551 sq. ft.
Covered Entry 35 sq. ft.

TOTAL 3,656 sq. ft.

NOTE: The Collier County Appraiser website lists the pool area as an additional 994 square feet yielding a total area of 4,650 sq. ft.



THE DRAWINGS HEREIN ARE CONCEPTUAL AND SHOULD NOT BE RELIED UPON AS REPRESENTING THE FINAL DETAIL. DIMENSIONS, FEATURES AND SPECIFICATIONS OF THE HOME ARE SUBJECT TO CHANGE WITHOUT NOTICE. BUILDER RESERVES THE RIGHT TO SUBSTITUTE BUILDING MATERIALS, APPLIANCES AND EQUIPMENT OF SIMILAR QUALITY. POOLS REPRESENTED ARE FOR INFORMATIONAL USE ONLY. ACTUAL POOL PACKAGES OFFERED ARE DETERMINED BY THE BUILDER.